



Are your rabbits ready for summer?

With the weather getting warmer (if not much drier!), those of you with rabbits are probably enjoying having them out in their runs and gardens for longer periods. Rabbits make lovely pets, but they need regular handling and cleaning and can be as much, if not more, work than a dog or cat. Have you made sure your rabbits are up to date with their vaccinations and flystrike prevention?

Fly season runs from April to October and the risk of flystrike is highest when the weather is warm and humid.

Flies can lay their eggs in a rabbit's fur and once they hatch into maggots they feed on the rabbit's skin causing large sore areas which, if not noticed early, are often fatal. The flies are attracted to soiled areas so it is important

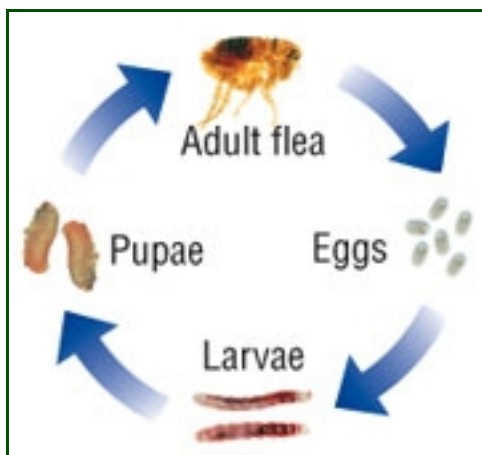
to check your rabbits twice a day and ensure that both they and their living areas are kept clean and dry. Some rabbits struggle to keep themselves clean especially if they are overweight or have arthritis or dental disease, these pets will need extra grooming from you to keep them clean and comfortable. There are products available to help protect your rabbit from flystrike and a nurse appointment can be booked for application. Please ask at reception for more information.

The two diseases we recommend vaccination against are Myxomatosis and Viral Haemorrhagic Disease (VHD). Myxomatosis is spread by blood-sucking insects and so contact with other rabbits is not needed for your rabbit to be at risk. VHD is more usually spread by close contact but can be carried on clothes, bedding and fleas etc. Both diseases are often fatal; we recommend vaccination yearly against VHD and every six months against myxomatosis. These checkups also allow us to catch any signs of disease early as, because rabbits are prey animals, they are very good at hiding signs of illness.

The right diet is important to keep rabbits' teeth and guts healthy. Rabbits need lots of fibre in their diet, best provided by good quality hay and ideally also time outside grazing. Leafy greens are also good but try and avoid too many salad vegetables as these are high in sugars. Rabbits only need a small quantity of pelleted rabbit food.

Itchy and Scratchy?

With modern homes and central heating fleas can breed all year round. However as the weather warms up they also start breeding outside, further increasing the risk of your pet picking them up. The flea's life cycle can be as quick as two to three weeks from egg to egg-laying adult though fleas can survive as eggs and pupae in the right environment for many months. A house left empty for a couple of weeks while pets and owners are on holiday often means that all the fleas cycle to the pupal stage and are ready to hatch once stimulated by the return of the house's inhabitants. This means owners often notice more flea bites on return from holiday as multiple fleas hatch at once.



The Flea's Life Cycle

However, you may not see fleas on your pet as they are very small and very fast. Flea dirt is easier to spot; if you brush your pet over some damp paper towel you will see black specks which streak a rusty red when rubbed. This is because flea dirt is mainly digested blood.

If you think your pets may have fleas feel free to contact one of our small animal team for some advice on the right course of action for your lifestyle and pets. It can be a long process to clear fleas and all your pets plus your home will need treatment. Monthly preventative flea control year round is the best way to prevent fleas from breeding in your home.



Congratulations to Jo and Will on the birth of Alfie!

Many of you will know Jo from her nurse clinics though she is currently on maternity leave! She and her partner Will (who some of you will have met as he's one of our farm vets) welcomed Alfie Thomas William Sheppard into the world at 4am on 15th May, weighing in at a respectable 7lb exactly. Mum and baby are doing well and have already been in to the practice for a visit and a cuddle.

Are you a member of our Pet Health Plan Club yet?

The Endell Veterinary Group Pet Health Plan offers an easy, cost effective way to meet your pet's essential healthcare needs. We believe that preventative health care is an important part of pet ownership; things like vaccines and parasite control are important factors in helping your pet have a long and healthy life. As well as vaccines, wormers and flea control, the plan provides a six-monthly check up to catch any problems early, something that becomes increasingly important as your pet ages. This is not the same as pet insurance but allows you to save money and spread the cost of preventative health care for your pet and works well in conjunction with a good insurance policy.

What's included?

For a regular monthly fee your pet receives:

- Twice yearly health assessments
- Full annual vaccination
- Full worming program for cats and dogs for effective year round protection against round and tape worm (includes lungworm)
- All year round flea control for cats and dogs
- Full parasite program for rabbits to include *E cuniculi* and fly strike prevention

In addition, you get discounts on the following

- Routine consults
- Neutering
- Microchips
- Dental treatments
- Additional vaccinations
- Hill's lifestyle diets



Pet Health Plans - Price Comparison Chart for Cats

Plan Inclusions	Kitten	Adult Cat	Older Cat
Annual vaccination course	N/A	£38	£38
Primary vaccinations	£70	N/A	N/A
Two visits a year for a ten point health check	Health and weight checks included	£31.50	£31.50
Year round flea and worm treatment	£81.69	£117.60	£117.60
Microchipping	Save up to £25	N/A	N/A
Microchipping £10 if not already chipped, plus chip checks	N/A	Save up to £15	Save up to £15
Annual blood cell count and biochemistry screen	£60.40	£60.40	£60.40
Annual blood pressure check	N/A	N/A	£33.85
Annual kidney screen by urine analysis (specific gravity)	N/A	N/A	£9.14
Discounts include: 25% off routine neutering (kittens only) 10% off: ● In-house dental procedures ● Hill's food bought in the practice or a Hill's Loyalty Scheme Card ● Medications for your pet when purchased in the practice ● Procedures in the practice, including in-house laboratory tests	Not available unless a member of EVG Pet Health Plan Club		
Annual Total Pay As You Go	£237.09	£262.50	£305.49
PHP Annual Total	£138.60	£151.20	£176.40
Save up to	£98.49	£111.30	£129.09

Pet Health Plans - Price Comparison Chart for Dogs

Plan Inclusions	Small	Medium	Large	Giant
Annual vaccination course	£38	£38	£38	£38
Two visits a year for a ten point health check	£31.50	£31.50	£31.50	£31.50
Year round flea and worm treatment	£101.04	£138.36	£177.74	£191.38
Microchipping £10 if not already chipped, plus chip checks	Save £15	Save £15	Save £15	Save £15
Annual blood cell count and biochemistry screen	£60.40	£60.40	£60.40	£60.40
Annual dry eye test	£3.84	£3.84	£3.84	£3.84
Discounts include 10% off: ● In-house dental procedures ● Hill's food bought in the practice or a Hill's Loyalty Scheme Card ● Medications for your pet when purchased in the practice ● Procedures in the practice, including in-house laboratory tests	Not available unless a member of EVG Pet Health Plan Club			
Annual Total Pay As You Go	£249.78	£287.10	£326.48	£340.12
PHP Annual Total	£151.20	£176.40	£201.60	£218.04
Save up to	£98.58	£110.70	£124.88	£122.08

PHP Prices	Cat			Dog			
	Kitten	Adult	Older	Small	Medium	Large	Giant
Monthly	£11.55	£12.60	£14.70	£12.60	£14.70	£16.80	£18.17
Annually	£138.60	£151.20	£176.40	£151.20	£176.40	£201.60	£218.04
Daily	£0.38	£0.41	£0.48	£0.41	£0.48	£0.55	£0.60

For more information, including details of our Puppy and Rabbit plans, please visit our website, call in to Reception or ring 0800 169 9958.



Client Survey Results

We were delighted with results of our recent customer feedback survey, which can be found on the "Testimonials" page of our website, and have also been nominated for the Pet Plan Practice of the Year. We are always looking for ways to improve our service, so feel free to use the forms in reception or online on our website to let us know how we've done and to pass on any suggestions for improvements.

Please visit our new-look website: www.endellveterinarygroup.co.uk